



San Diego HIV Implementation Science Hub

Issue #3

In this Issue:

- Spotlight
 - Rhea Van Brocklin
 - Maile Young Karris
- Upcoming Events and Opportunities
 - Implementation Lessons Learned in Scaling Up a Network-Enhancement Suicide Prevention Model
 - Rapid Qualitative Methods in Implementation Science: Approaches and Applications
 - UC San Diego Implementation Science Seminar
 - EPIS Office Hours
 - SEIS Hub Systems Science Workshop
 - Adaptation, Fidelity, and Tailoring Workgroup Meeting

SPOTLIGHT: Rhea Van Brocklin

Rhea Van Brocklin is the Executive Director at Christie's Place and part of the UCSD Implementor Learning Core (ILC).

She is one of ten national participants selected for the POISE Implementation Science 2026 Learning Cohort through Northwestern. She has also been invited to present to the ISCI Visiting Scholars Program, where she will share her experience with POISE and her implementation science work at Christie's Place.

Congratulations Rhea! We are excited to see all that you accomplish through this opportunity!



[Learn more here!](#)

Spotlight: Maile Young Karris



Image: Maile Young Karris and George Karris, her husband

Maile Young Karris is an Associate Professor, the Co-Director of the San Diego Center for AIDS Research Clinical Investigations Core, and she directs the Implementer Learning Core (ILC).

She was selected to serve on the Implementation Science Steering Committee (ISSC) for the ACTG, led by Elvin Geng and Aadia Rana. Through this role, she is working to integrate implementation science components into every ACTG study and helping to develop implementation science infrastructure across all aspects of the network.

Congratulations, Maile! We are excited to see the impact of your work!

Upcoming Events and Opportunities



C-DIAS PREPARE
IMPLEMENT
SUSTAIN
Center for Dissemination
& Implementation At Stanford



PSMG PREVENTION SCIENCE &
METHODOLOGY GROUP

C-DIAS PSMG VIRTUAL GRAND ROUNDS



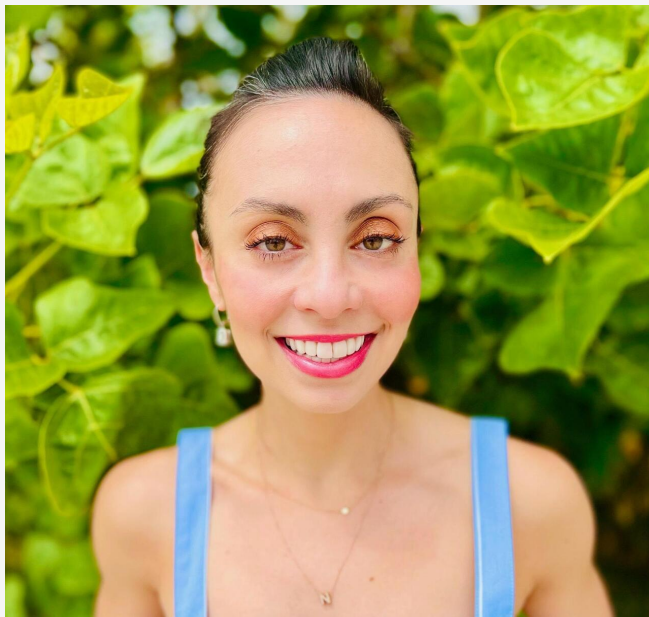
[Peter Wyman, PhD](#)

Professor

University of Rochester Medical Center



William Bevens, PhD
Postdoctoral Scholar
University of California, San Diego



Nicole Stadnick, PhD, MPH
Associate Professor
University of California, San Diego



Bryan Yates, BA
Senior Research Coordinator
University of Rochester Medical Center



Gregory Aarons, PhD
Professor
University of California, San Diego



[Anthony Pisani, PhD](#)

Professor

University of Rochester Medical Center

Implementation Lessons Learned in Scaling Up a Network-Enhancement Suicide Prevention Model

Suicide rates among US military members have steadily increased since 2010, and suicide is now the first- or second-leading manner of death across branches. The US Air Force and university-based prevention scientists launched a research-practice partnership (2014) to develop and test an ecologically-valid, unit-level program: **Wingman-Guardian Connect (WGC)**. Prior to this partnership, no RCT-validated programs shown to reduce suicide risk across broad military populations were in wide use, and most training models were adapted from programs developed in other contexts.

This presentation will briefly review WGC's interactive network enhancement training model and RCT results (N=1500) showing WGC reduces suicide risk, depression symptoms and work problems. The primary focus will be on lessons being learned through ongoing force-wide expansion of WGC to 68 bases as the new Air Force Resilience Program. This presentation will summarize the design of an ongoing hybrid effectiveness-implementation trial (NIMH funded) testing WGC delivered by USAF personnel on 9 early-adopter bases (20,000 personnel exposed to WGC) along with findings from implementer feedback and performance assessments being used to refine the implementation package. We will also describe challenges and facilitators to the implementation of this new program in the evolving USAF landscape impacting resources and personnel to deliver preventive interventions on installations.

April 14, 2026

Time:

- 1:00 PM - 2:30 PM EDT
- 12:00 PM - 1:30 PM CDT
- 11:00 AM - 12:30 MDT
- 10:00 AM - 11:30 AM PDT

[Enter the Meeting!](#)

UAB, UCLA, & UCSD Implementation
Science Consultation Hubs Co-Present:

Rapid Qualitative Methods in Implementation Science Approaches and Applications



Alison Hamilton, PhD, MPH
University of California Los Angeles
PI, UCLA 3R IS Hub
Professor, UCLA Dept. of Psychiatry
Research Career Scientist, VA Greater
Los Angeles



Robin Lanzi, PhD, MPH
University of Alabama at
Birmingham
MPI, UAB HIV IS Hub
Professor, UAB School of Public Health



**Borsika Rabin, PhD, MPH,
PharmD**
University of California San Diego
Co-Director, San Diego HIV IS Hub
Professor, Wertheim School of Public
Health
Co-Director, ACTRI D&I Science
Center



Nicole Stadnick, PhD, MPH
University of California San Diego
Co-Director, San Diego HIV IS Hub
Assoc Professor, Dept. of Psychiatry
Co-Director, ACTRI D&I Science Center

Wednesday, April 15, 2026
10:00 AM PDT / 12:00 PM CDT
Via Zoom

[**Click Here
to Register**](#)

Rapid Qualitative Methods in Implementation Science: Approaches and Applications

Wednesday, April 15, 12–1 pm CDT

Co-hosted by the UAB, UCLA 3R, and San Diego Implementation Science Hubs.

Presenters: Alison Hamilton PhD, MPH, Robin Lanzi PhD, MPH, Borsika Rabin PhD, MPH, PharmD, Nicole Stadnick, PhD, MPH

Register here!

UC San Diego Implementation Science Seminar

April 16th, 2026
2-3 PM Pacific Time

Co-hosted by: ACTRI DISC, IN STEP, and SD HIV IS Hub

Scaling Evidence Across VA: Insights from QUERI Implementation Projects

Innovative Treatments for Recovery Implementation Program (ITRIP) QUERI



Dr. Borsika Rabin



Dr. James Pittman

Coordinated Access for Addiction Recovery and Equity in VA Supportive Housing (CARE-VASH) QUERI



Dr. Sonya Gabrielian



Dr. Emily Treichler



Dr. Alison B. Hamilton

Enhancing Mental and Physical health of Women through Engagement and Retention (EMPOWER) QUERI

Register Here:
<https://bit.ly/3OVk5qe>
or Scan the QR Code



QUESTIONS? EMAIL DISC@HEALTH.UCSD.EDU

UC San Diego Implementation Science Seminar

Thursday, April 16, 2026 2-3PM PT

Presenters: Borsika Rabin PhD, MPH, PharmD, James O. E. Pittman, PhD, LCSW, Sonya Gabrielian, MD, MPH, Emily Treichler, PhD, Alison B. Hamilton, PhD, MPH

Register here!



ERIKA CRABLE, PHD

EPIS OFFICE HOURS

2ND TUESDAY OF THE MONTH
SESSION 1: 8:00 TO 9:00 AM PACIFIC TIME
OR

SESSION 2: 16:00 (4PM) TO 17:00 (5PM) PACIFIC TIME



GREG AARONS, PHD

An opportunity to learn about the EPIS Framework!

- Informal opportunity to meet other EPIS users
- Ask questions about the EPIS Framework
- Share your experiences using the EPIS Framework
- Discuss application of D&I Theories, Models, and Frameworks etc.

Questions? Email DISC@health.ucsd.edu

REGISTER HERE:

[HTTPS://TINYURL.COM/EPISOFFICEHOURS](https://tinyurl.com/episofficehours)



UC San Diego
ACTRI Dissemination and
Implementation Science Center

EPIS Exploration, preparation,
implementation and sustainment

EPIS Office Hours

Description: The EPIS Office Hours are an opportunity to speak with experts in the Dissemination and Implementation Science (DIS) Field. Learn from the developers of the Exploration, Preparation, Implementation, and Sustainment (EPIS) Framework about applying it to your work. These office hours bring together EPIS users of all backgrounds and experience levels and provide an opportunity to ask EPIS-related questions and learn from one another. EPIS Office Hours are offered at two times- feel free to join either session!

Tuesday, April 14, 2026

- Session 1: 8-9AM PT
- Session 2: 4-5PM PT

Register here!

WORKSHOP SERIES:

LEVERAGING SYSTEMS SCIENCE TO ADVANCE IMPLEMENTATION SCIENCE IN HIV

MAY 18-19, 2026 | Atlanta, Georgia | Rolling Admission & No Cost to Attend

2026 WORKSHOP APPLICATION OF SYSTEMS SCIENCE METHODS TO THE STUDY OF IMPLEMENTATION MECHANISMS

The "Application of systems science methods to the study of implementation mechanisms" training, hosted by the Southeast HIV Implementation Science (SEIS) Hub, **Alex Morshed, PhD, MS**, and **Ellis Ballard, MSW, MPH**, is a 1.5 day in-person training program designed to strengthen participants' understanding of approaches to understand implementation mechanisms from the systems science perspective. This course is part of the annual *Leveraging systems science to advance implementation science in HIV* series focused on integration of systems science thinking and methods in HIV implementation research.

With workshop instructors who actively use these methods and additional implementation science expert speakers, you will gain an overview of approaches for understanding implementation mechanisms, practical guidance for applying group model-building and system dynamics simulation methods in this emergent area of implementation science, and technical consultations to develop or strengthen your project design.

APPLICATION OPENS FEBRUARY 15, 2026.

VANDERBILT UNIVERSITY
MEDICAL CENTER



EMORY
ROLLINS
SCHOOL OF
PUBLIC
HEALTH

SCAN HERE
TO LEARN MORE
AND APPLY



For questions, please email the SEIS Hub coordinators olivia.keatley@emory.edu and hannah.l.brooks@vumc.org.

SEIS Southeast HIV
Implementation Science Hub

SEIS Hub Systems Science Workshop

Call for Applications!

Admission: Rolling, until capacity is reached.

Application Materials: Application form and Biosketch

Cost: No cost to attend. Participants are responsible for travel and lodging. If you are traveling from outside of Atlanta, we will be offering up to 8 awards for \$500 in reimbursement for travel costs.

When: May 18–19th, 2026

Location: Hosted by Emory University in Atlanta, GA.

Who: This workshop is designed for HIV researchers at any stage of implementation science expertise who want to integrate systems science methods to support implementation science. Priority will be given to early-stage investigators and those associated with a Center for AIDS Research, ARC, or DCFAR. Please forward to your networks!

Questions: Please email Olivia Keatley: olivia.keatley@emory.edu or Hannah Brooks: hannah.l.brooks@vumc.org.

Apply here!

The Workshop Instructors:



Alexandra Morshed, PhD, MS.
Emory University



Ellis Ballard, MSW, MPH
Tributary Design

ADAPTATION FIDELITY & TAILORING WORKGROUP

MEETING

APRIL 20TH, 2026

9:00 - 10:00 AM PACIFIC TIME

Peer Empowered Endometriosis Pain Support (PEEPS): A Patient-Driven Approach to Endometriosis Care

Presenter:



**Whitney Trotter
Ross, MD, MSCI**

Assistant Professor of
OB-GYN,
WashU Medicine

Minimally Invasive
Gynecologic Surgeon
(MIGS)

Register here:

<https://bit.ly/3z96LKy>



<https://aft.ucsd.edu>



DISC@health.ucsd.edu



Adaptation, Fidelity, and Tailoring Workgroup Meeting

Monday, April 20, 2026 9-10AM PT

Presenter: Whitney Trotter Ross, MD, MSCI

Topic: Peer Empowered Endometriosis Pain Support (PEEPS): A Patient-Driven Approach to Endometriosis Care

Register here!

Additional Links

- [Services](#)
- [Events](#)
- [Resources](#)

Questions?

Reach out to our team at SDCFARDISC@health.ucsd.edu.

SUBSCRIBE TO THE NEWSLETTER!

[Unsubscribe](#) | [Privacy Policy](#) | [Submit Feedback](#)

This email was sent to.

To continue receiving our emails, add us to your address book.

9500 Gilman Dr | La Jolla, CA 92092 US

Copyright 2026 Regents of the University of California. All rights reserved.

[Subscribe](#) to our email list.